



INDOFINE Chemical Company, Inc.

121 Stryker Lane, Bldg. 30, Suite 1 • Hillsborough, NJ 08844 • U.S.A.

Phone: (908) 359-6778 • FAX: (908) 359-1179

website: www.indofinechemical.com

e-mail: chemical@indofinechemical.com

CERTIFICATE OF ANALYSIS

Catalog Number: 06-1350

Product Name: **10-SHOGAOL**

Botanical Source: Ginger

CAS Number: [36752-54-2]

Lot Number: 1605780

Chemical Formula: C₂₁H₃₂O₃

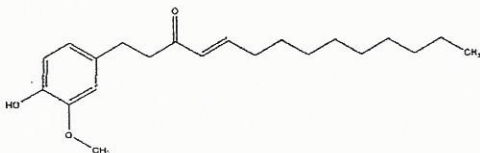
Molecular Weight: 332.48

Appearance: Brown oily liquid

Loss on Drying: 0.8%

Storage: Store in a cool, dry place. Protect from light.

Purity(HPLC): 98.22%





INDOFINE Chemical Company, Inc.

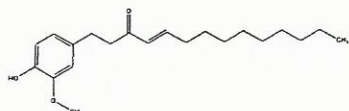
121 Stryker Lane, Bldg. 30, Suite 1 • Hillsborough, NJ 08844 • U.S.A.

Phone: (908) 359-6778 • FAX: (908) 359-1179

website: www.indofinechemical.com

e-mail: chemical@indofinechemical.com

HPLC ANALYSIS



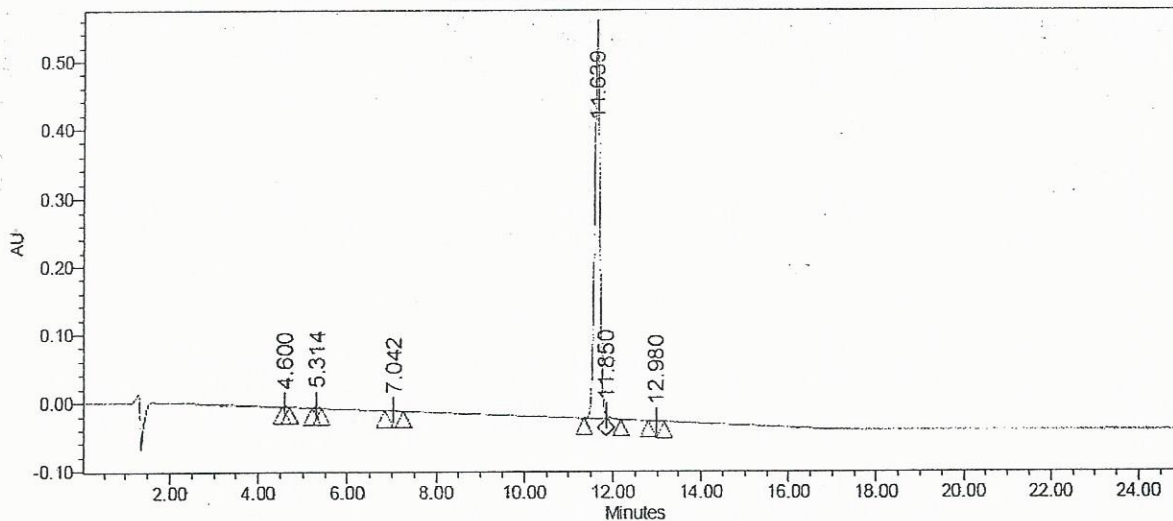
Catalog No.: 06-1350
Product Name: 10-Shogaol
Lot No.: 1605780

SAMPLE INFORMATION

Sample Name: 10-shogaol
Sample Type: Unknown
Vial: 1:A,3
Injection #: 1
Injection Volume: 10.00 ul
Run Time: 25.0 Minutes

Sample Set Name:
Acq. Method Set: 10-shogaol
Processing Method: Samples
Channel Name: 225.0nm
Proc. Chnl. Descr.: PDA 225.0 nm

Auto-Scaled Chromatogram



Peak Results

| | Name | RT | Area | % Area | USP Plate Count | USP Resolution |
|---|------|--------|---------|--------|-----------------|----------------|
| 1 | | 4.600 | 12196 | 0.24 | 20865.15 | |
| 2 | | 5.314 | 28318 | 0.56 | 25881.86 | 4.92 |
| 3 | | 7.042 | 12809 | 0.25 | 35035.01 | 10.08 |
| 4 | | 11.639 | 4947127 | 98.22 | 40520.74 | 21.67 |
| 5 | | 11.850 | 29267 | 0.58 | | 0.91 |
| 6 | | 12.980 | 7060 | 0.14 | 189078.98 | 3.47 |